

Parent Handbook

2018/2019
(v4.Aug2018)



Junior Competition Pathway Pyramid

World	<ul style="list-style-type: none"> WSF World Junior Squash Championships, Chennai, India – 18th – 19th July 2018 - www.wsfworldjuniors.com
Europeans	<ul style="list-style-type: none"> Visit www.europeansquash.com to view all dates
British	<ul style="list-style-type: none"> British Junior Open, Birmingham – 02nd – 6th January 2019 British Junior Closed, Nottingham – 26th – 28th October 2018
Nationals	<ul style="list-style-type: none"> Welsh Junior Open, Cardiff – 07th – 09th September 2018 Welsh Junior Closed, Bangor – 18th – 20th January 2019 South Wales Junior Open, Cardiff – 30th November 2018 – 2nd December 2018
England Silver Events	<ul style="list-style-type: none"> Silver event 1 – 13th -14th October 2018 Silver event 2 – 24th – 25th November 2018 Silver event 3 – 30th – 31st March 2018
England Junior Inter County Championships	<ul style="list-style-type: none"> Stage 1 - 17th – 18th November 2018 (New format, no stage 2) Junior finals - 23rd – 24th February 2019
1 Day Events	<ul style="list-style-type: none"> Powys Junior Open - 21st October 2018 Newtown Junior Open – 13th January 2019 Cardiff Junior Open – 19th March 2019 Swansea Junior Open 2019
Development events	<ul style="list-style-type: none"> Dates TBC
Regional Junior league	<ul style="list-style-type: none"> Dates TBC

Introduction

Squash Wales have created this 'Parents Handbook' in an aim to provide an understanding of the squash game and lifestyle and also to provide links to the supporting documentation which can be located on our website.

It is a product of SQW Officers, after consultation with our Safeguarding Steering Group.

Its purpose is to address any queries that might arise, whether you are joining squash as a new player, or whether you are a few months in, or whether you are deemed as an experienced player.

Supporting documentation can be located from our website:-

www.SQW.co.uk

Should you wish to provide any feedback/comments on the booklet, or would like to see anything added, please contact:- Danielle.brown@squash.wales

Contents	Page
Introduction	2
Vision	4
Structure	5
Membership cost & benefits	6
Safeguarding	7
High Performance Coaches	11
Player Pathway	11
Coaching – ‘Back to Basics’	12
Competitions	13
Exception reporting	14
New to squash – Regional Development Officer contact details	15
Ranking	16
Coach education programme	17
Player commitment & conduct requirement	18
Code of conduct – drafted by children (The Bribery Act 2010)	19
Eligibility	20
Selection Criteria	21
Selection criteria & Representational Events	23
Quality Assurance	24
Complaints Procedure	24
Feedback	24



Share the Sport Wales vision:-

- A focus on young children with physical literacy, teaching them basic skills and setting them up for life.
- The opportunity to take part in at least five hours of high quality sport every week.
- Greater community links between schools, clubs and facilities to maximise opportunities and pathways for participation.
- Greater success at elite level through ambitious target setting.
- An army of a workforce with the skills to make a difference.

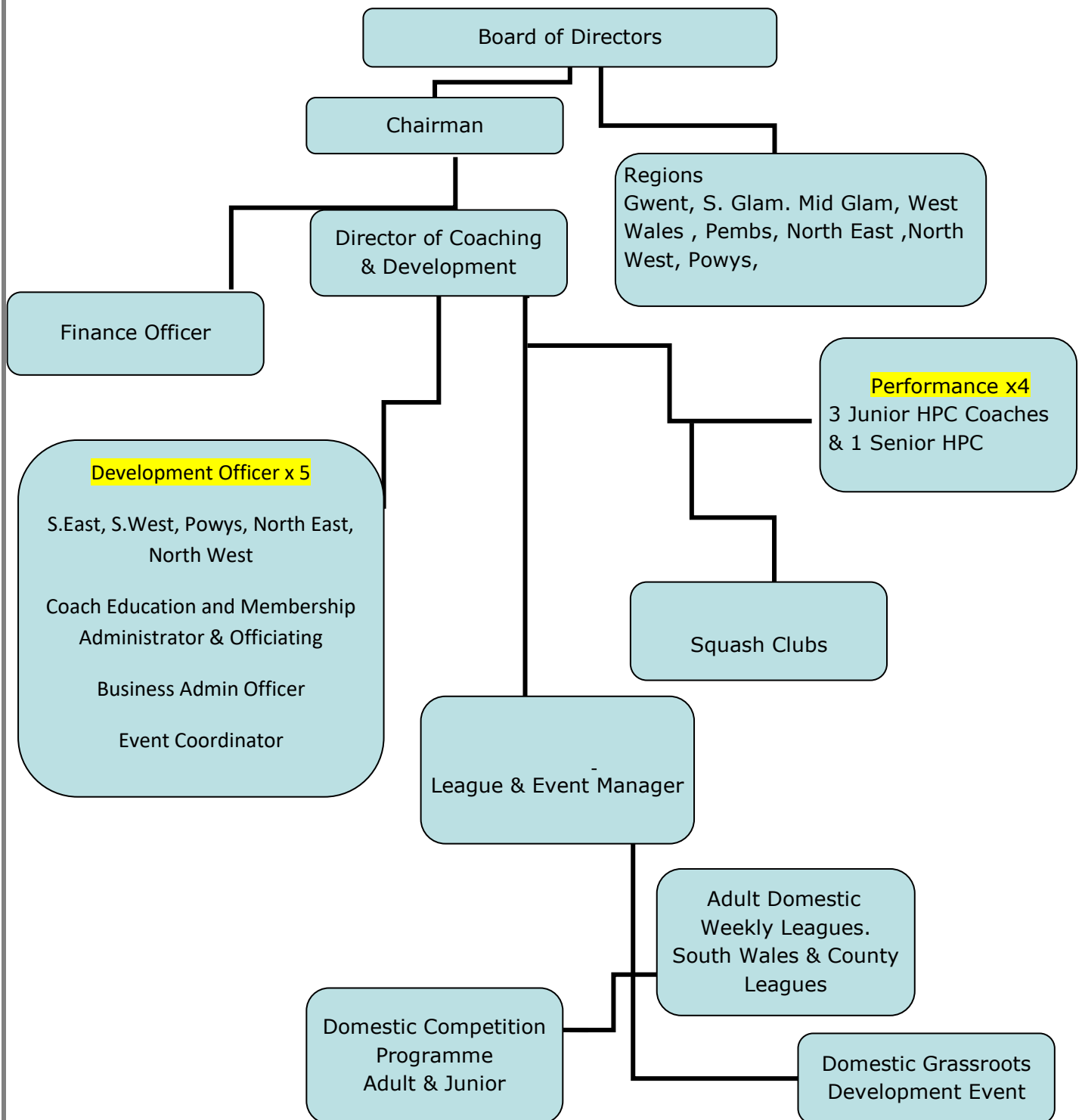
For further information please refer to our partner's website: - www.sportwales.org.uk

SQW Vision

- Increase the popularity and profile of squash.
- Increase participation in squash.
- Ensure coaches and referees are suitably qualified and receive continuous professional development.
- Continue to provide a system to nurture elite players so that they can mature and fulfil their potential.
- Achieve success on the highest stage.
- Produce players who are honoured to represent their country.
- Foster players who respect their sport, their peers, their family, their coaches and themselves.

SQW real objective is to have as many players partaking in squash and racketball from the age of 7 to 70 who have a great time playing.

SQW Structure



Membership - There are four membership categories:-

- Coach , Referee, Adult, Junior

Renewal date of each membership is the 31st August.

Category	Costs	Benefits
Coach	Annual Direct Debit = £28.00 Annual Online = £32.00 Annual by Post = £36.00	<ul style="list-style-type: none"> • Free Liability Insurance cover ○ Squash player magazine – Three times a year ○ Subsidised coach education and referee courses ○ Invitation to free mentoring workshops ○ Discounted junior equipment packs ○ Free advice and support from the National Governing Body ○ Personal Injury Insurance ○ Membership Card
Referee	Annual Direct Debit = £15.00 Annual Online = £18.00 Annual by Post = £20.00	<ul style="list-style-type: none"> ○ Karakal 50% savings ○ Free Liability Insurance cover ○ Squash player magazine – twice a season ○ Subsidised coach education and referee courses ○ Invitation to free referee mentoring workshops ○ Free advice and support from the National Governing Body ○ Opportunity to attend a free Safeguarding & Protecting Children workshop ○ Personal Injury Insurance ○ Membership Card
Adult	Annual Direct Debit = £10.00 Annual Online = £12.00 Annual by Post = £14.00	<ul style="list-style-type: none"> ○ Karakal 50% savings ○ Membership Card ○ Personal Injury Insurance ○ Squash Player Magazines ○ Newsletters ○ Discounted Coach/Player Education Courses ○ Reduced entry fees for SQW tournaments ○ Opportunity to join the Ranking lists ○ Opportunity to play in the Masters Home Internationals (over 35 and above)
Junior – Academy Member i.e. under 19 years	£60 annually	<ul style="list-style-type: none"> ○ Invited to attend 5 days (30 Hours) Academy Coaching ○ Eligible to attend 42 Academy weekly training nights (1 or 2 hours) coaching, NOTE:additional £5 weekly contribution. ○ Eligible to be invited to Junior National Squads for an additional £60 per year (a further 48hrs Nat Squad coaching with 4 nights B&B for a player & parent (saving £280). ○ Eligible to receive Talent Support funding if selected. ○ Reduced entry fee to SQW Tournaments. ○ Opportunity to be selected to represent Regions in the English Inter-County Championships ○ Squash Wales information:- ○ Tournament entry forms posted ○ Junior ranking system ○ European tournaments ○ Newsletters ○ Annual fixture list ○ Discount on clothing and equipment ○ Free entry into exhibitions and coaching clinics
Junior Member under 19 years	£10.00 a year payable to your junior section coach or join directly with SQW	<ul style="list-style-type: none"> ○ SQW membership card and tie to attach to your kit bag ○ Individual personal accident insurance ○ SQW support and guidance
Junior Bronze Schools	Free	<ul style="list-style-type: none"> ○ SQW support – posters – equipment ○ School Visits ○ SQW coaching support/advice in the clubs for school visits ○ Junior Festivals in schools and leisure centres
		○

Safeguarding

The aim of SQW is to create a safe environment for children, members, officials and volunteers and to help maintain a high standard of professionalism and standard of practise that can be associated with sport.

- All coaches are registered
- All coaches/officials/volunteers and staff are DBS checked where working with children
- All coaches/officials/volunteers and staff complete an annual self-disclosure, where working with children
- All coaches attend First Aid workshops
- All coaches attend Safeguarding and Protecting Children workshops

Examples of documentation, policies and procedures in place that can be located on the SQW website:-

- Safeguarding and Protecting Children policies
- Code of Conduct
- Code of Ethics
- Personal disclosure and DBS (previously CRB) checklist forms
- Good practise – social networking
- Impact posters/child safety (designed by children/children focussed)

In addition **Child Welfare Officers** can be located in the majority of the clubs, for the safety and protection of the players.

Workshops free of charge are available contact: Danielle.brown@squash.wales

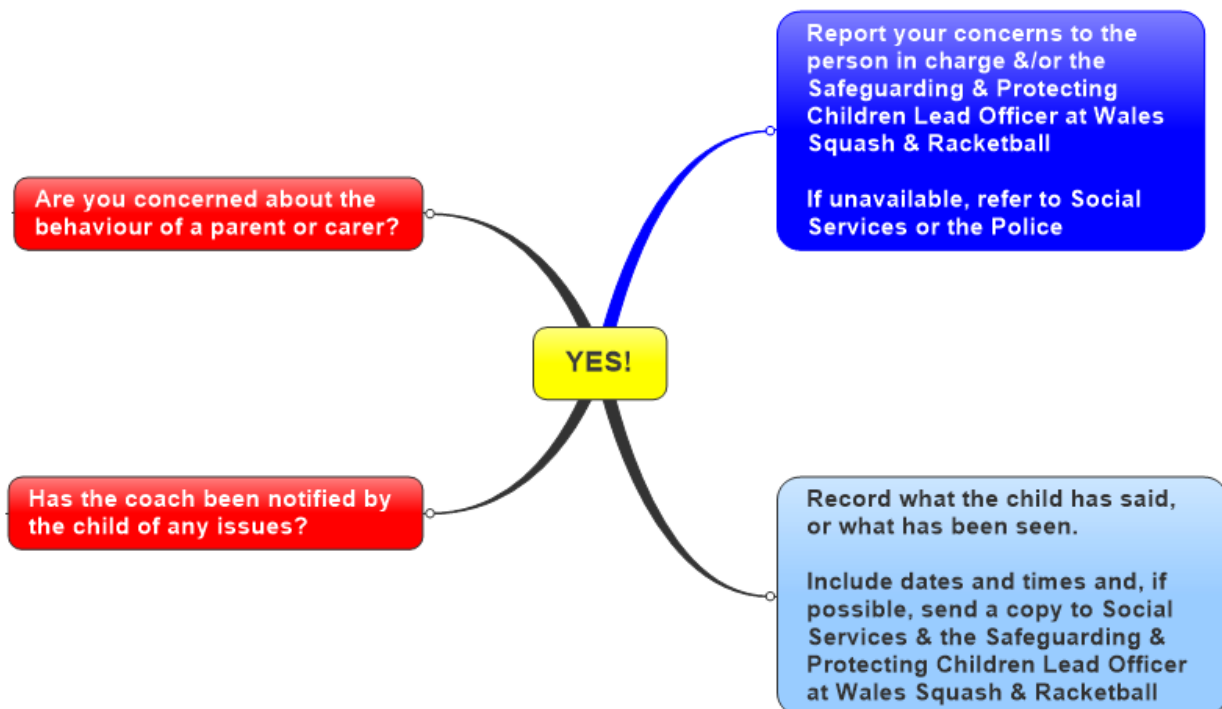
A Child Welfare Tool Kit is available on the web site



Safeguarding – continued...

Part 1

This section is designed to be a guide to the most appropriate action in relation to concerns about either a parent, carer, (outside the immediate squash environment).

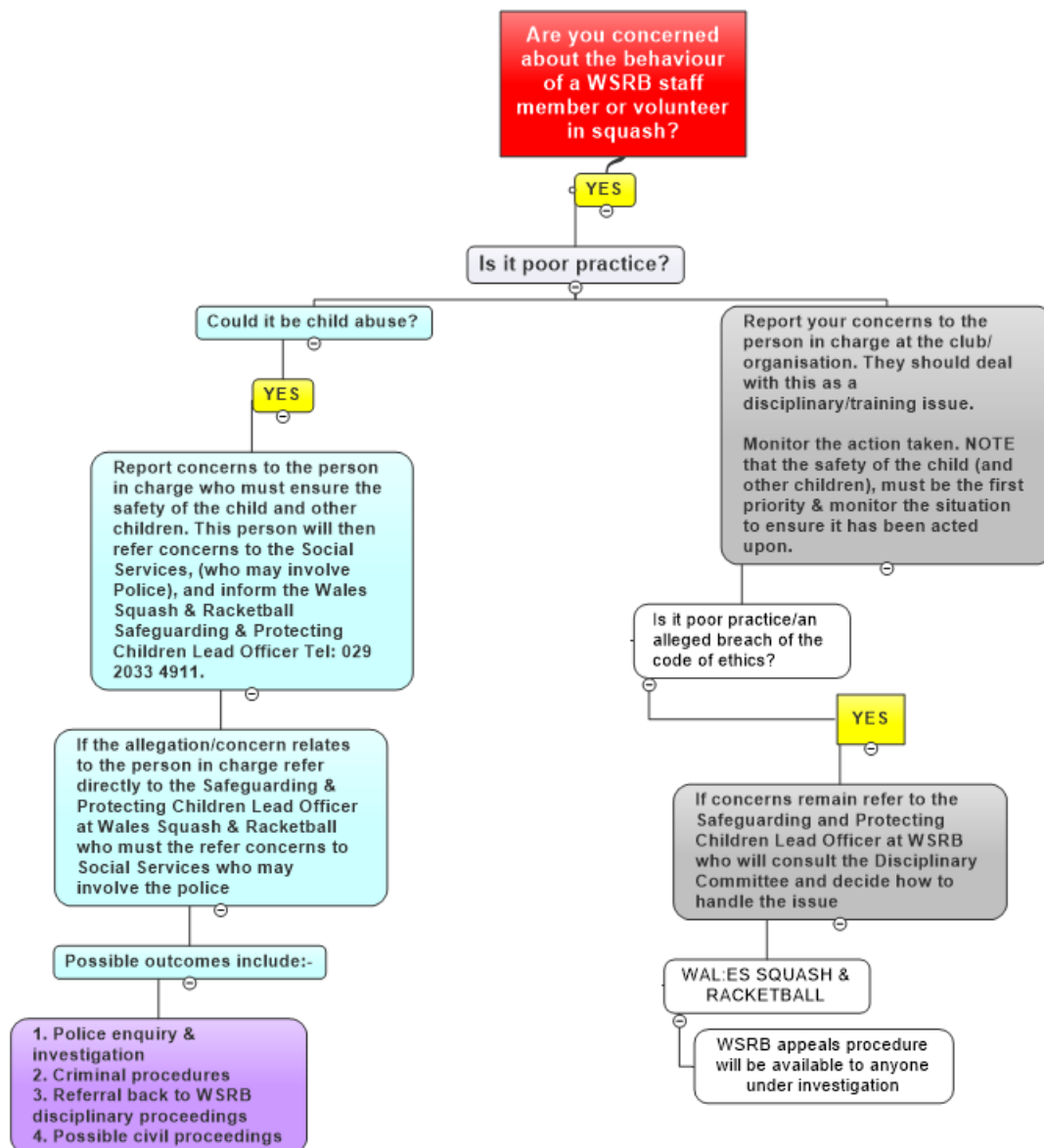


Remember

- Maintain confidentiality at all times. Only inform people 'who need to know'
- Ensure the person in charge follows the matter up with Social Services
- The person in charge should inform the SQW Safeguarding & Protecting Children Lead Officer

Part 2

This section is designed to inform the most appropriate action in relation to concerns about a member or volunteer within SQW or any other related organisation.



If you do not know who to turn to for advice or are worried about sharing your concerns with a senior colleague you should contact Social Services directly, the NSPCC on 0808 800 5000 or Childline on 0800 1111.

For further information:- www.SQW.co.uk/coaching/safeguarding

Safeguarding journey...

As part of our Safeguarding Journey we are working toward a Level 3 Standards for Safeguarding & Protecting Children in and through sport in Wales.

A presentation was delivered on 19th December 2012, to which the attached feedback was received in April 2013.

The feedback highlights that we have clear evidence of progress against the standards, with a strong young people-centered approach. This is great credit to all the good work volunteers and stakeholders have assisted us with. However, it has identified areas which require updating within our implementation plan.



Working in partnership with Sport Wales and CPSU, we will continue to strive towards Level 3 – having a target date of 1st December 2013 to submit the updates required without the need of presenting back to panel members.

Early November 2013, the updated implementation plan was submitted, and on 27th November 2013 Squash Wales achieved advanced Level 3.

This is due to continued contribution from the organisation in creating a safe environment for children and young people that work towards the Framework for Safeguarding and Protecting Children in and through Sport in Wales.



High Performance Coaches

Roles & responsibilities

- To establish and maintain standards for sports to inform and protect members of the public using their services.
- Responsibility to observe the code of ethics, well-being, health and future of the individual performer.
- Responsible for setting and monitoring boundaries between a working relationship and friendship with the players. To display a favourable image of their sport and to ensure the safety of players within their limits of control.
- Responsible for delivering the SQW 'back to basics' coaching programme.
- Responsible for setting National Squad players targets, monitoring their performance and assisting how to achieve measures.
- Responsible for developing the players, using training diaries (monitoring diet and training sessions attended).
- Responsible for reporting Key Performance Indicators in connection with player performance.



Director of Coaching & Development			
	Mike Workman	Mike.workman@squash.wales	07971052567
Age Group	HPC Name	Email contact	Mobile contact
Juniors U11/U13	Greg Tippings	gregtippings@yahoo.co.uk	07824660035
Juniors U15	Nic Birt	Nic.birt@yahoo.co.uk	07813301904
Juniors U17/U19	Andrew Evans	0738starssquash@gmail.com	07796177197
Seniors	David Evans	David.evans@squash.wales	07540329328
Strength & Conditioning	Mark Harris	mark.harris1968@talktalk.net	07387216237

SQW Performance

SQW plan to deliver an exciting season of: - Coaching, Competition and Coach Education.

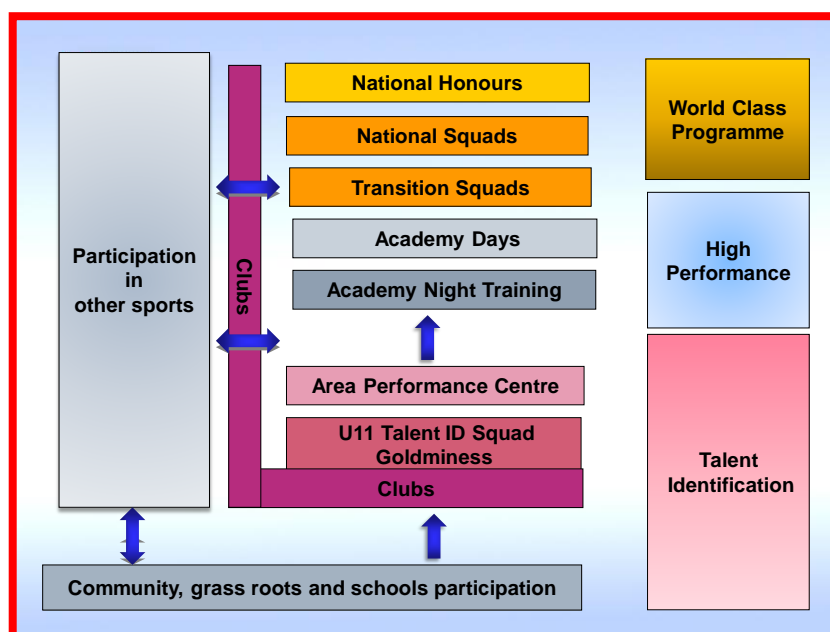
COACHING - SQW Performance Player Pathway - NOTE: All Junior players must be SQW Academy members

The player pathway is predominantly funded by Squash Wales in order that juniors from all regions in Wales receive specialised coaching on a regular basis both regionally and nationally:-

- **Elite Cymru** – World class coaching and competition programme for Welsh players with world rankings
- **Individual 1-2-1** coaching from the HPC's for U13/U15/U17/U19 Elite and emerging Elite players
- **European Tournament Support** – HPC's will be funded to attend, coach and provide instant feedback to all Welsh players competing at the cutting edge of competition in selected European Super Series and English Silver tournaments
- **National Squads – U17/19 & U15** National Squads - 4 squads of 2 Days (48hrs coaching). **U13** National squads - 2 squads of 2 days and 6 x 1 day regional squads.
- **Academy Squads** – regionalised Academy coaching for 30hrs for players aged U11 to U19
- **Academy Training Night** – up to 42 weeks of regional training night sessions offered to academy players(Player Contribution required)
- **Transition programme** – (Junior to Senior) players will be invited to attend selected BPSA tournaments with coaching provided by the Senior Player High Performance Coach at the event
- **Area Performance Centres(gold mines)** – School term weekly localised coaching (Player contribution required).
- **Talent ID Squad** – 11 and under mixed talent ID coaching programme with boys and girls receiving over 30hrs of coaching culminating in a Fun Series over 2 days
- **Strength and Conditioning Coach** – Access to Strength & Conditioning Coach - in concert with the SQW HPCs.

For further information:- www.walessquashandracketball.co.uk/performance/backtobasics/playerpathway.

SQW Player Pathway



COMPETITION – SQW Domestic Competition Programme

- SQW Plan to deliver a comprehensive junior and adult tournament programme in Wales (see - www.wsrb.co.uk Competition/Calendar) placing the results on the SQW web site and linking the results to the national ranking system in the 3 regions of Wales.
- Entry forms are placed on the web site 1 month in advance – Web / competition/entry forms. On line entries will be available for the WJO,WJC, WC,WMC.
- We will administer a comprehensive South Wales and County League structure for all levels of playing ability male and female ensuring, all results are entered onto the SQW web site weekly. (See www.wsrb.co.uk Leagues/League Fixtures)

Junior Opportunities

- Junior National Events – Welsh Junior Closed and South Wales Junior Open.
- Junior European Event – Welsh Junior European Open.
- Junior Regional Events – Gwynedd, Cardiff, Swansea, Powys, Prestatyn, Llanelli, Newport, Pembrokeshire.
- English Inter-Counties, 2 stages on 2 full days and possible Finals Weekend
- Various Grassroots/Development junior teams 3 day Events, Leagues and Orange Ball tournaments in all regions.
- 11/13 Challenge weekend. U15/17 Challenge weekend.

Senior Opportunities

- Adult Event – Welsh Closed, Newport Open, North Wales Open
- Racketball National Championships
- Masters Closed and European Open Championships
- Various County Closed/Open , Powys , Llantrisant,Llanishen,Hirwaun Open tournaments.
- Comprehensive South Wales and County League structure for all levels of playing ability – male and female.
- English Inter-Counties, 1 stage on 2 full days and possible Finals Weekend
- Welsh Inter County Men’s and Ladies Team Championships Weekend

National Events European Event	Regional Events
<p>Tournaments/events players are expected to enter, which will enable consideration for selection/honours within the SQW structure.</p> <p>Benefits:-</p> <ul style="list-style-type: none"> ○ Monrad -Receive more ranking points for finishing positions ○ Consideration to play for Wales ○ All results are taken for information and are put forward for selection purposes <p>Risk of non-attendance:-</p> <ul style="list-style-type: none"> ○ Risk of non-selection to play for Wales 	<p>Tournaments/events where players can play, develop match play, compare self to others, learn from others, and receive ranking points.</p> <p>Benefits:-</p> <ul style="list-style-type: none"> ○ Monrad – Receive ranking points ○ All results are taken for information and are put forwards for selection purposes <p>Risk of non-attendance:-</p> <ul style="list-style-type: none"> ○ lack of ranking points ○ unable to gage where player is in terms of playing ability

COMPETITION

SQW Domestic Competition Programme

NORTH		SOUTH		WEST			
ADULT EVENTS & TOURNAMENTS X 3 PLUS Masters Open/ Closed. Powys & Llantrisant Opens		ADULT LEAGUES SEPT – APRIL 160 TEAMS WEEKLY		WELSH INTER-COUNTY 10 TEAMS OVER 1 WEEKEND & finals		ENGLISH INTER-COUNTY TEAMS South & North Men & Women	
JUNIOR National Open Euro / National Champs TOURNAMENTS		JUNIOR REGIONAL Sanctioned TOURNAMENTS by application x 8		ENGLISH JUNIOR INTER-COUNTY TEAMS 7 AGE GROUPS STAGES 1 AND FINALS			
11 & UNDER TALENT ID				GRASSROOTS JUNIOR DEVELOPMENT TOURNAMENTS U11/13 CHALLENGE DEVELOPMENT TEAMS EVENT			
Racketball Introduce Racketball to all clubs in Wales Hold national championships				Racketball Structured Competition throughout Wales – leagues in the summer			

EXCEPTION REPORTING

There will be occasions when a player cannot attend an event, for reasons such as illness or injury, for example. If this is the case a player must submit an exception report.

For further information:-

www.wsrb.co.uk/competition/entryforms.

NEW TO SQUASH OR FIRST TOURNAMENT

General information and squash etiquette:-

- Tournaments are run over a 1 or 2 day weekend
- There can be significant gaps between matches to enable players to have suitable rest
- It is squash etiquette not to clap an opponent's bad shot and only clap in a positive way
- Players trying to be selected to play for Wales are expected to attend compulsory/mandatory events
- These events will provide the player with more ranking points
- It is seen as good manners to remain for the presentation ceremony at the end of a tournament regardless of whether receiving a trophy
- A young player can learn from watching older children, so use your spare time wisely
- This provides knowledge and awareness on the technical role
- Use tournaments to help learn to referee matches

If you would like to know more about a development tournament near you contact:

- Sarah Clode RDO South .East - sarah.clode@SQW.co.uk
- Jayne Kirk RDO Mid Wales - Jayne.Kirk@btconnect.com
- Peter Crook RDO South West - petercrook23@hotmail.com
- North Wales RDO - Andrew Evans starssquash@googlemail.com
 RDO Steph Roberts - StephenRoberts1@gwynedd.gov.uk



ADULT RANKINGS

JUNIOR RANKINGS

- Adult/Junior rankings are calculated on 'head to head' matches.
- Each player is allocated starting points depending on their standard – usually determined by what league/division they play in at the time – these starting points are reviewed as best as possible to reflect a player[s] improvement/decline in standard.
- 'Foreign Players' are included in the system but are not shown in the rankings lists, a match against such a player will earn the 'Welsh' qualified player the relevant points.
- Beating a player of a much higher standard will earn more points than beating a player of a lesser standard thus reflecting the achievement.
- All Leagues/Divisions carry the same value for points' allocation.
- Tournaments carry varying points' values depending on the tournament standard.
- Male vs. Female or vice versa do NOT count towards ranking points.
- Rankings are calculated on a 'rolling' points system i.e. points earned in the previous 12 months are the only ones used to calculate ranking positions.
- At the present we have 3011 players in total [male & female] in the system and 20658 results – results over 12 months old stay in the system for historical purposes only.
- If a player wants to see how many points they gained/lost for a particular result they can do so by finding themselves in the ranking list, select 'how' on the right hand side of their ranking and all their matches will be listed showing the points values.
- A player's best 5 results are used to calculate their total point's value which determines their ranking.
- Girls cannot achieve points from playing in Boys events and vice versa.

For further information:-

www.sqw.co.uk/leagues/rankings



Coach Education Programme

SQW offer the following qualifications and awards

Coaching Qualification	What the Coach will be qualified to do?	Cost
Level Four Award in Coaching Squash with England Squash.	Design, implement and evaluate the process and outcome of long-term/specialist coaching programmes. Generate, direct and manage the implementation of cutting-edge coaching solutions	TBC
England Level Three Award in Coaching Squash	Plan, implement, analyse and review annual coaching programmes Residential.	£1,500
England/Wales Squash Level Two Award in Coaching Squash	Prepare for, deliver and review coaching session(s)	£300
England/Wales Squash Level One Certificate in Coaching Squash	Identify player needs for a variety of different participants. Deliver Squash & Racketball to beginners of all ages & participation groups. Implement how-to-coach skills to create an inclusive & positive learning environment. Coach basic technical & tactical (what to coach) skills	£200
Squash Wales Assistant Coach Award in Coaching Squash	Assist more qualified coaches, delivering aspects of coaching sessions, under direct supervision.	£25
Squash Wales Club Grade Referee Course	This will consist of a 3 hour presentation on the basic rules of the game with various hand-outs and videos. After the course all learners will also need to take an examination paper	£150 per course

PLAYER COMMITMENT

SELECTION CRITERIA & PROCEDURE FOR JUNIORS WHO WISH TO BE CONSIDERED FOR MEMBERSHIP OF AN ACADEMY SQUAD

Compulsory Criteria

Juniors must:

1. Be a current paid up Junior Member of Squash Wales which costs £10.
2. Be eligible to represent Wales as outlined in the Welsh Nationality Protocol.
3. Sign and return Squash Wales Code of Conduct and Commitment for Home & Away Events Form.
4. Pay a contribution of £60 towards the cost of the Academy Squad coaching.
5. Pay an additional contribution of £60 if invited to Jnr National squads.

In order to be eligible for Welsh representation, all players will be judged on attendance , behaviour and results in the following :

- National Squads that the player has been invited to.
- Welsh National Events-Welsh Jnr Open & Welsh Jnr Closed (group 1)
- Welsh Grand Regional tournaments and SQW Grand Prix Event (group 2).
- Regional Academy Day squads and weekly Academy Training night squads.
- English Inter-County Championships (if selected)
- English Silver tournaments
- British Closed and Open and European Tournaments.

Note: A player may be removed from an Academy Squad at any stage if they fail to comply with the compulsory criteria.

SQW require a certain commitment from the players on acceptance of selection to squads and teams.

Both players and parents sign up, on an annual basis, to a Code of Conduct, which defines behaviours expected.

For further information:-

www.wsrb.co.uk/performance/playerpathway

GENERAL CONDUCT EXPECTED OF PLAYERS

Each player must always display a favourable image of the sport, and therefore there is an expectation of behaviour.

Both players and parents sign up, on an annual basis, to a Code of Conduct, which defines behaviours expected.

For further info :- www.wsrb.co.uk/coaching/safeguarding/safeguardingdocuments

CODE OF CONDUCT FOR CHILDREN

(as drafted by the Children...)

- Be happy – play with a smile on your face
- Be a good sportsman
- Stay safe in Sport
- Make sure your coaches treat you at your own level
- Don't argue with the referee
- Always wear your goggles
- Don't throw or bang the racket
- Don't kick the glass
- Don't hurt your opponent
- Don't swear
- Ask for a let if there's a danger
- If you're not playing do not run on courts
- Ask permission to go outside or to the toilets



CODE OF CONDUCT FOR PARENTS

- be supportive, make sure you have food and drink ready, and give constructive criticism
- come to speak after every game, and support us from the balcony
- watch us, and tell us what we should work on, if the coach does it in the lesson
- I would like my parents to watch me, but not cheering things such as '*come on try harder!*'. I would also like them to say to me '*well done!*'
- To give hints and tips on how to improve and to stay calm
- To also be positive
- Encourage, clap, when they play a good shot
- Give you a chocolate bar after, and a hug
- Keep happy and support me, but help with some advice
- I would like my parents to support me and cheer me on
- Be quiet
- I wouldn't like my mum and dad to come because it make me rubbish
- I would like my father not to give me dirty looks if I do a bad shot
- Provide transport and pay for everything

- SQW do not endorse all statements, these have been written by the children, on which SQW encourage feedback
- For further information:-
www.wsrb.co.uk/safeguarding/safeguardingdocuments/safeguardingchildrenposters

The Bribery Act 2010

- SQW will not tolerate any form of bribery or coercion.
- The Bribery Act 2010 modernises the law on bribery. It comes into force on 1 July 2011. This document offers a quick guide to the things you need to know to prepare your business for implementation.
- The Government has also produced detailed guidance about the Act and the procedures that organisations can put in place to prevent bribery, as well as a set of illustrative case studies which you may find of further assistance (available here: www.justice.gov.uk/guidance/bribery.htm).

ELIGIBILITY

WELSH NATIONALITY PROTOCOL

This document explains what criteria a player needs to meet in order to be eligible to represent Wales in European and World tournaments.

1. Squash Wales (SQW) will welcome Junior, Senior or Masters players who wish to exercise a dual-nationality qualification in order to make themselves available for selection for Welsh Junior, Senior or Masters teams.
2. In considering such players, SQW will have regard to, in particular, European Squash Federation (ESF) eligibility requirements. Please see appendix below.
3. Where SQW receives an approach from a dual-nationality player to be considered for one of its squads/teams, the following will apply prior to selection for any squad/team;
 - a. The player must produce documentary evidence of his or her qualification for Wales by virtue of the Birth Certificate of his or her Parent or his or her citizenship or his or her 4 year residency; and
 - b. The player must then sign a SQW player commitment form and abide by its terms; and
 - c. The player must achieve and maintain a Welsh ranking.
4. Where a player achieves selection for a Welsh squad, the player will be expected to relinquish his or her national ranking in the country of his or her birth.
5. Where a player achieves selection for and represents Wales in an ESF recognised international squash team event, that player will be unable to represent his other country of birth or any other country for 3 years from the date of the relevant event or the last relevant team event in which he or she participates whichever is the later.

Appendix

ESF eligibility requirements for its team championships which reflect the requirement set down by the World Squash Federation (WSF).

A player should be eligible to represent a country in ESF championships only:

- a. If he or she has not represented another country in a recognised international squash team event in any age group in the 36 months preceding the start date; and
- b. If he or she represents:
 - i. The country of his birth; or
 - ii. The country of either Parent; or
 - iii. The country in which he or she is a citizen; or
 - iv. The country in which he or she has been resident for 4 years immediately preceding the start date.

A properly qualified player who has once represented a country in a recognised international squash team shall be eligible to represent that country thereafter until such time as he or she exercises a qualification to represent another country, thus making him or her no longer eligible under a or b above.

SELECTION CRITERIA

For selection for Wales the process procedures are as follows:-

For each event, recommendations with rationale are made by the High Performance Coach (HPC) with the responsibility for that relevant age group:-

- Under 11/13 – Greg Tippings
- Under 15 – Nic Birt
- Under 17/19 – Andrew Evans
- Over 19 – David Evans

The rationale will include information that either justifies the selection of a particular player or the reasons why a particular player has not been recommended.

The HPCs will consider the following criteria when selecting a team:-

- Nature and type of event
- Ranking
- Current form
- Results
- Seniors
- Juniors
- Behaviour & Attitude

Consideration in this category will be given to the required profile for the Welsh team to be selected, including issues of the age and experience of the players to be selected. This may mean that, when in the opinion of the HPCs the overall performance and prospects of a Welsh team is unlikely to be adversely affected, a

lower ranked or less experienced player may be selected over someone more experienced and higher ranked.

(a) Selection Policy and Procedures:-

In order to be eligible for welsh representation, all players will be judged on attendance , behaviour and results in the following :

- National Squads that the player has been invited to.
- Welsh National Events-Welsh Jnr Open & Welsh Jnr Closed (group 1)
- Welsh Grand Regional tournaments (group 2)
- Regional Academy Day squads and weekly Academy Training night squads.
- English Inter-County Championships (if selected)
- English Silver tournaments
- British Closed and Open and European Tournaments.

Recommendation that in addition the selection panel will have an option to use a 'wild card' system/procedure to which all 4 HPC's have to agree to.

Agreed – 2 wild cards for the men

Agreed – 1 wild card for the women

WILD CARD MEANS – DOES NOT HAVE TO MEET CURRENT COMMITMENT LEVELS.

4 SELECTORS HAVE TO AGREE. Ratified by SQW Management

Management ratification:-

It is the intention that the decision of the HPCs will be by majority. Team selections will then be forwarded to the Management Committee for ratification. After selection, all the players concerned will be contacted by letter by The Director of Coaching and Development confirming their selection.

After selection, if there are any queries or questions, please contact the HPC age group coach.

There is no right of appeal.

For further information:-

www.wsrb.co.uk/performance/representation

REPRESENTATIONAL EVENTS

The selection policy may be used to select individuals and/or teams for the following events.

Depending upon circumstances, teams/players may not be entered in all of the events shown below:-



Seniors - Women		
World Team Championships		Bi-annual
World Cup		Bi-annual
European Team Championships		Annual
Commonwealth Games		4 yearly
World Games		4 yearly
European Individual Championships		annual
Seniors - Men		
World Team Championships		Bi-annual
World Cup		Bi-annual
European Team Championships		Annual
Commonwealth Games		4 yearly
World Games		4 yearly
European Individual Championships		Annual
Juniors - Girls		
World Championships	Team and Individual	Bi-annual
European Championships U19	Individual	Annual
Juniors - Boys		
World Championships	Team and Individual	Bi-annual
European Championships U19	Individual	Annual
Juniors - Mixed		
European Championships U19	Team	Annual
European Championships U17	Team	Annual
European Championships U15	Team	Annual
5 Nations Championships U13	Team	Annual
5 Nations Championships U15	Team	Annual

QUALITY ASSURANCE

SQW is always looking for continuous improvement and therefore, seeks feedback from junior and adult players participating in tournaments, squads and coaching courses.

The feedback consists of commentary on areas such as:-

- Event organisation
- Location
- Court suitability
- Catering support
- Enjoying national squads/competitions

SQW encourages all players to notify of their feedback, to help future events.

COMPLAINTS PROCESS

From time to time complaints or allegations arise. There is a reporting mechanism to flag the issues with SQW.

SQW disciplinary procedures (as detailed in SQW Child Protection Discipline and Dispute Resolution Procedures) will be used to deal with any formal complaint and/or appeals.

The Conduct Report and Complaints Procedures have been drawn up in order to deal with conduct reports, complaints, any allegations of misconduct, including safeguarding and protecting children issues, made against any person or organisation over which SQW Limited has jurisdiction.

For further information:-

www.wsrb.co.uk/coaching/safeguarding/safeguardingpolicies/conductandcomplaintprocedure

FEEDBACK PROCESS

Should you wish to provide any feedback/comments on the booklet, or would like to see anything added, please contact:-

Mike.workman@squash.wales

